



AP REALTY

Vivid • Creator • Incline



Good Interior

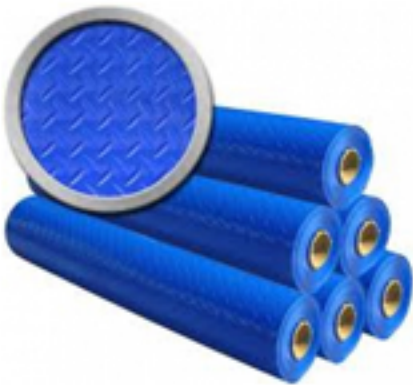
DESIGNING IS NOTHING, BUT A MIRROR



CIVIL

FLOORING , Cement Mortar, Brick Wall, Floor Protection

Flooring is the general term for a permanent covering of a floor, or for the work of installing such a floor covering.. Materials almost always classified as flooring include carpet, laminate, tile and vinyl. Providing and laying vitrified tiles of approved and of different sizes flooring in proper line and level including neat white cement float, filling joints with neat cement slurry. Ceramic glazed tiles are used on toilet walls .We also use Granite for wash basin counter, pantry counter etc. made by horizontal or vertical blockings by kaddapa slap. Floor protection is important to protect the floor so we use the HDP sheet for floor protection. As per requirement we provide & construct and plaster brick masonry wall based on architecture's guidance.



Cement Mortar is used to hold building materials such as brick or stone together. It is composed of a thick mixture of cement ,sand and stone, by 1:2:4

The water is used to hydrate the cement and hold the mix together. The water to cement ratio is higher in mortar than in concrete in order to form its bonding element.





Water Proofing

Waterproofing is the process of making an object or structure water-proof or water-resistant, so that it remains relatively unaffected by water or resisting the ingress of water under specified conditions. Such items may be used in wet environments or under water to specified depths.

Plumbing and Sanitary

We provide the following services:

- ◆ Laying of Input output and waste line
- ◆ Installation of WC,Urinal,sink,wash Basin etc
- ◆ Installation of Bathroom Accessories-Angular Stop Cock,Pillar Cock,Bip Cock,Waste Coupling ,bottle trap,Soaf dispenser tray,PVC Connector Pipe etc
- ◆ Installation toilet and bath cubical

CIVIL



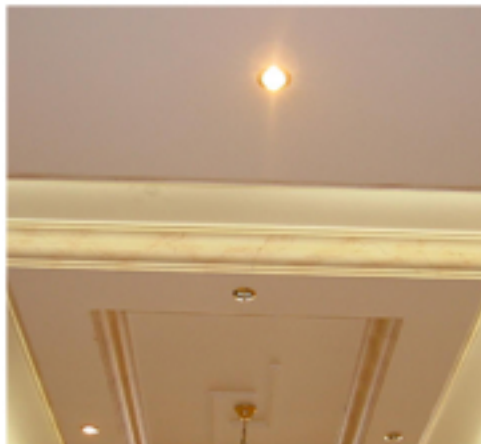


False ceiling is provided below the roof slab on suspended supports. The false ceiling is usually provided for temperature control (heat insulation for AC), to install lights, or to conceal electrical and other networking cables and ugly or too high ceiling.

FALSE CEILING

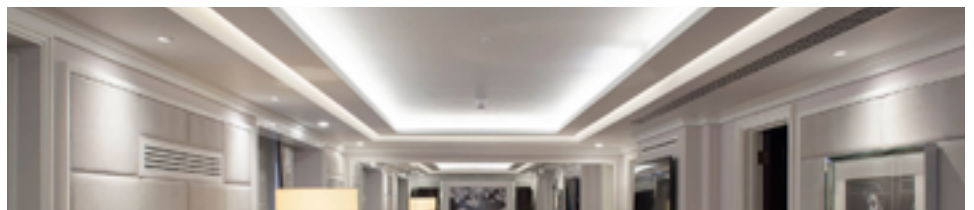
Various type of False Ceiling

- ◆ Gypsum False Ceiling
- ◆ POP false ceiling
- ◆ Metal Ceiling
- ◆ Synthetic Leather or Cloth Ceiling
- ◆ Grid Ceiling



Advantages of False Ceiling

- ◆ It provides a smooth homogeneous surface to the roof.
- ◆ It provides fire protection as it creates compartmentation.
- ◆ False ceiling helps in acoustical treatment.
- ◆ It conceals all the non-pleasing elements and hides it from the viewer's eyes.
- ◆ It also hides the pipelines and the electrical cables running in the room. All the ducts of air-conditioning can be hidden under it.
- ◆ False ceiling materials are easy to install and cheap as compared to traditional roof systems.





Our extensive range can be used to create stylish, modern and functional office interiors. Our products are specifically designed to suit all budgetary requirements whether seeking a low cost solution or a high end specification.

Types of Partition walls for Offices

Depending upon the material used partition walls may be divided into the following different types

- ◆ Glass partitions
- ◆ Concrete partitions – plain or reinforced
- ◆ Metal lath and plaster partitions
- ◆ A.C. sheet or G.I. sheet partitions
- ◆ Timber partitions
- ◆ Sound proof Partitions
- ◆ Wooden partitions
- ◆ Modular Partition
- ◆ Gypsum Partition

PARTITION SYSTEM

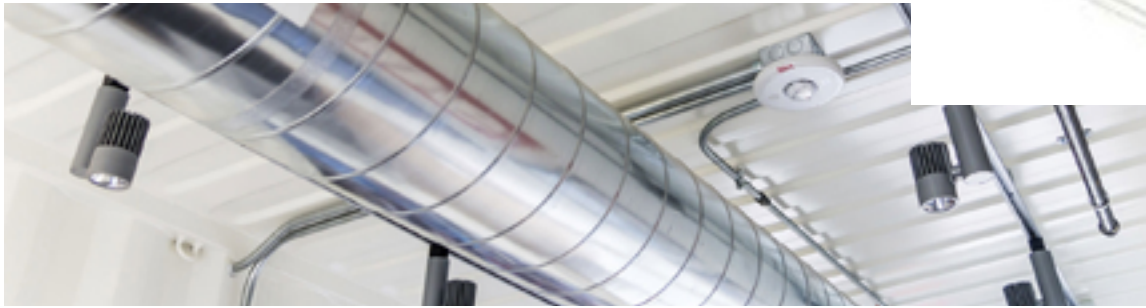




POP & PAINTINGS



- ◆ Matte Paint. Matte color is the most common of interior wall paints.
- ◆ Matte Enamel. Matte enamel is very much like matte paint, but tends to be far more durable.
- ◆ Satin.
- ◆ Eggshell.
- ◆ Semi-gloss.
- ◆ Gloss Paint.



We are specialized in the following variables:

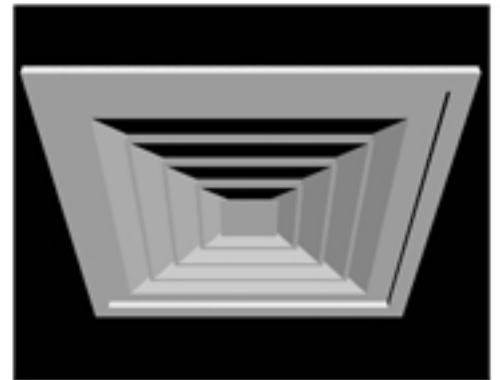
Ductable air conditioner: In this system one duct or line has to go through all rooms to flow the pure & cooled air to the rooms & one duct or line has to bring all corrosive air outside the rooms & flows into outwards.

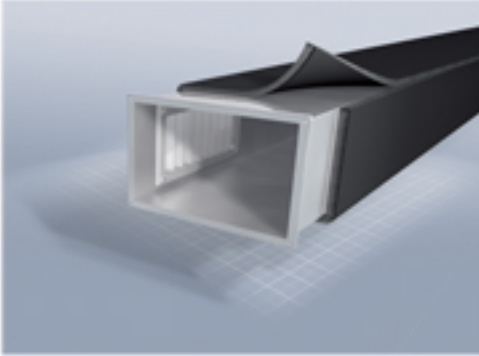
VR F System: Variable refrigerant flow (VRF), also known as variable refrigerant volume (VRV), is an HVAC technology invented which help us to reduce power consumption. Chillers use either a vapor-compression or absorption refrigerant cycle to cool a fluid for heat transfer.

Chiller System: A chiller is a machine that removes heat from a liquid via a vapor-compression or absorption refrigeration cycle. This liquid can then be circulated through a heat exchanger to cool equipment or another process stream.

Split Air Conditioner: A split air conditioner consists of two main parts: the outdoor unit and the indoor unit. The outdoor unit is installed on or near the wall outside of the room or space that you wish to cool. An indoor section and matching outdoor section are connected by refrigerant tubing "split". The indoor section consists of a fan, indoor cooling coil, heating section.

AIR CONDITIONER





Ducts are conduits or passages used in heating, ventilation and air conditioning (HVAC) to deliver and remove air. The needed airflows include, for example, supply air, return air, and exhaust air. Air ductwork is made of sheet metal which is installed first and then lagged with insulation.

DUCTING & PIPING

- ◆ Aluminum duct work is lightweight and quick to install.
- ◆ Galvanized mild steel is the standard and most common material used in fabricating ductwork because the zinc coating of this metal prevents rusting and avoids cost of painting.
- ◆ Fiberglass duct board panels provide built-in thermal insulation and the interior surface absorbs sound, helping to provide quiet operation of the HVAC system.
- ◆ Flexible ducts (also known as flex) are typically made of flexible plastic over a metal wire coil to shape a tube.
- ◆ Besides the ducts themselves, complete ducting systems contain many other components. ie : Vibration isolators, Take-offs, Stack boots and heads, Volume control dampers etc

Insulation: We do ducting and piping to do the Insulation to prevent from sweating and vibrating.





Panel

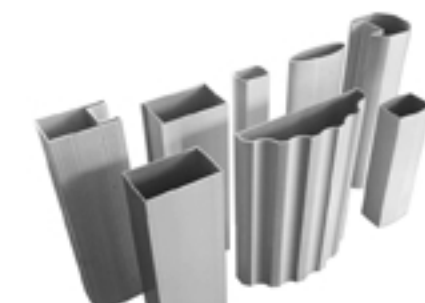
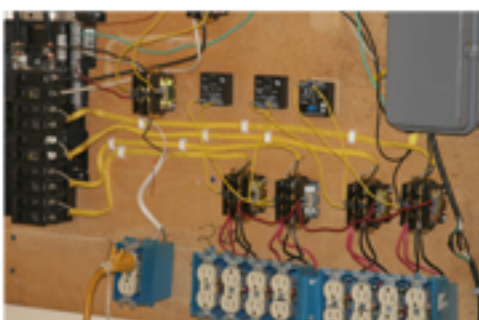
An electric panel is a component of an electricity supply system that divides an electrical power feed into subsidiary circuits, while providing a protective fuse or circuit breaker for each circuit in a common enclosure.

Aluminum Raceway

Raceways protect wires and cables from heat, humidity, corrosion, water intrusion and general physical threats.

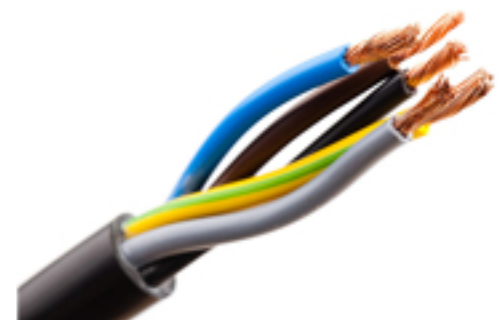
Lightning

Decorative lighting can be defined as the 'jewelry of architecture. We use different types of LED Lights to enlighten your office.



**We also supply and
Install false flooring for
server room.**

ELECTRICAL





NETWORKING & VOICE

We Do the following works :

- ◆ Supply and laying the data cable
- ◆ Supply and Installation server rack, patch panel, UTP patch cord, IO etc
- ◆ Network Switches
- ◆ Programming of server panel
- ◆ Supply and Installation MDF and IDF Box for voice
- ◆ Supply and Installation multipair cable crone block etc





OFFICE SECURITIES & PA SYSTEM

- ◆ **Access Control** : Access control is a physical and information security technique that can be used to regulate who or what can view or use resources in a computing environment. We are expert to install different types of access control systems depending on client's requirements.
- ◆ **CCTV** : We install Closed Circuit Television (CCTV), which is a system where the elements like camera, display monitors, recording devices are directly connected. In a CCTV system the signals are not publicly distributed but are monitored, primarily for surveillance and security purposes.
- ◆ **PA System** : A public address system (PA system) is an electronic sound amplification and distribution system with a microphone, amplifier and loudspeaker, used to allow a person to speak to a large public. This is another installation which we do successfully.
- ◆ **Projector** : A projector is a device that uses light and lenses to take an image and project a magnified image onto a larger screen or wall. Projectors can magnify still or moving images depending on how they are built. The image must be shone through a sealed tube or frame when passing through the lenses to maintain focus.





We use different accessories not just to enhance the soberness of the office but they have different functions of their own. Such as :

ACCESSORIES

Glass Film

It is used in the glass for the transparency of visually.

Wooden Flooring

Wood flooring is any product manufactured from timber that is designed for use as flooring, either structural or aesthetic.

Wall Paper

Wallpaper is a kind of material used to cover and decorate the interior walls of offices, cafes etc. and it is one aspect of interior decoration as highlighter of a particular place and it changes the whole look of the set up. It is usually sold in rolls



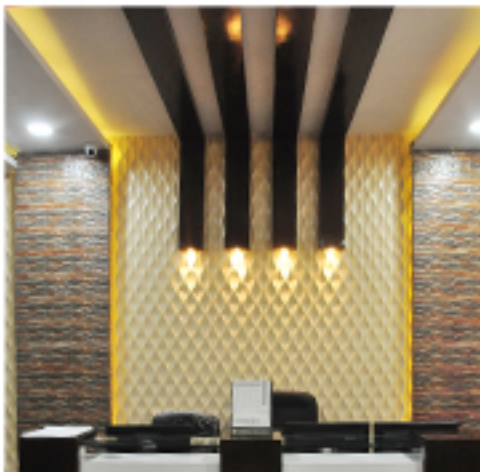


Carpentry

Wooden Furniture design is a specialized field where function and fashion collide. We interior designers believe that Wooden furniture is one of the most important aspects of an interior space. Pieces of Wooden furniture not only add function and practicality to a space, but they also add style and personality. Wooden Furniture can be of different variants.

- ◆ Workstations
- ◆ Table and chair
- ◆ Storage Systems
- ◆ Kitchen Cabinet
- ◆ Wooden Door and window
- ◆ Modular pantry/cafeteria
- ◆ Laminate Venire and Korean application
- ◆ Wooden Partition

FURNITURES AND CHAIRS





MODULAR FURNITURE

Modular furniture is defined as furniture made up of independent work surface and storage units with panels used as end panels or space dividers, these are flexible enough to arrange according to the choice and space. The beauty of modular architecture is that you can replace or add any one component (module) without affecting the rest of the system. The opposite of a modular architecture is an integrated architecture, in which no clear divisions exist between components. It is the easiest technology and can be prepared in less time. It can be prepared by MDF Board or particles.



- ◆ Linear workstation
- ◆ Cubical Workstation
- ◆ Executive and MD Table
- ◆ Full And half height storage
- ◆ Pedestal
- ◆ Locker Systems
- ◆ Modular Partition



Fire Alarms



A fire alarm system has a number of devices working together to detect and warn people through visual and audio appliances when smoke, fire, carbon monoxide or other emergencies are present. These alarms may be activated automatically from smoke detectors and heat detectors or may also be activated via manual fire alarm activation devices such as manual call points or pull stations. We are specialized in the following:

- ◆ Supply and Installation UL-Listed flexible pipe for sprinkler
- ◆ Supply and laying the copper armored cable
- ◆ Supply and Installation Fire detection cable
- ◆ Supply and Installation smoke detector, response indicator, heat detectors, electric hotter, MCP etc
- ◆ Fire alarm systems are really important and ensure the safety of everyone in the premises, as well as safe guard against the occurrence of potential property loss in the event of a fire.

FIRE SYSTEM





AP REALTY
Vivid • Creator • Incline



+91 033-4600-4564
+91 83350 54323



Martin Burn Business Park 6th Floor,
Unit No: 602, Block-BP-3, Sector-V,
Salt Lake City, Kolkata-700091



Website - www.aprealty.com
Email - info@aprealty.co.in

